

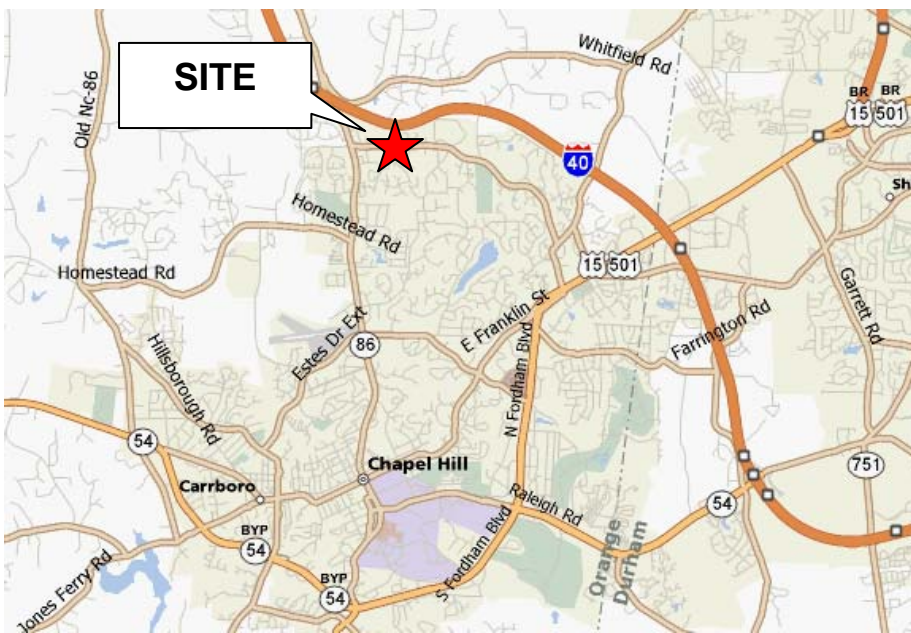
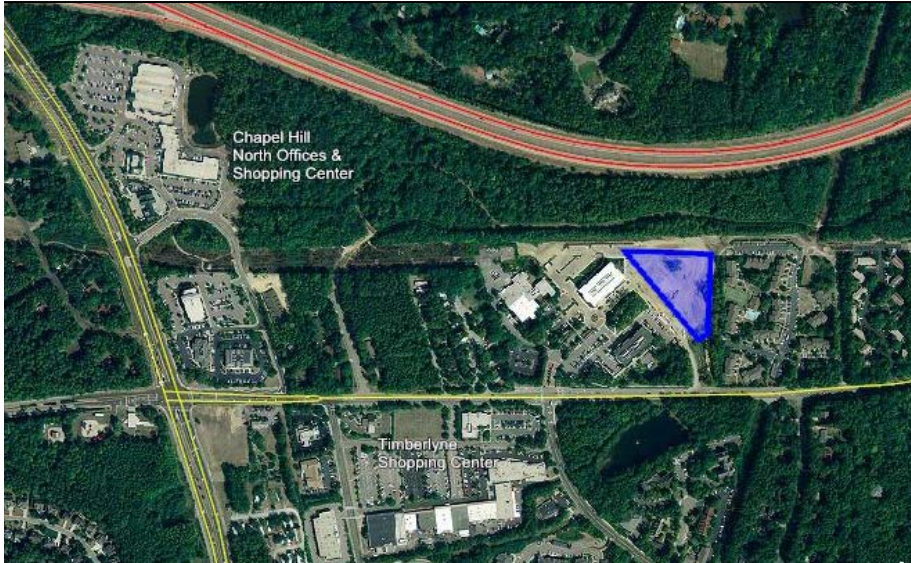
# Land for Sale

## Chapel Hill 40

Vilcom Circle, Chapel Hill, NC



**GRUBB & ELLIS.**  
Thomas Linderman Graham



### Features:

- Approximately 20,850 SF building pad located within Phase III of the Chapel Hill 40 office campus
- Approved to accommodate an 83,400-SF office building
- Site is in graded condition with all utilities to the property line
- Owner will consider:
  - Build to suit by owner
  - Sale of improved lot for \$1,750,000
  - Land lease
- Upon completion of the building, the area surrounding will fall under the supervision of the Chapel Hill 40 owners' association
- PIN: 9880-56-2331
- One mile to I-40, 5 miles to Downtown UNC and downtown Chapel Hill
- 12 miles to RDU International Airport
- Walking distance to restaurants, shops and services

### To learn more, please contact:

1511 Sunday Drive  
Suite 200  
Raleigh, NC 27607  
919.785.3434  
919.785.0802  
[www.tlgcre.com](http://www.tlgcre.com)

### John La Rocca

Principal, Senior Vice President  
919.420.1572 direct  
[john.larocca@tlgcre.com](mailto:john.larocca@tlgcre.com)

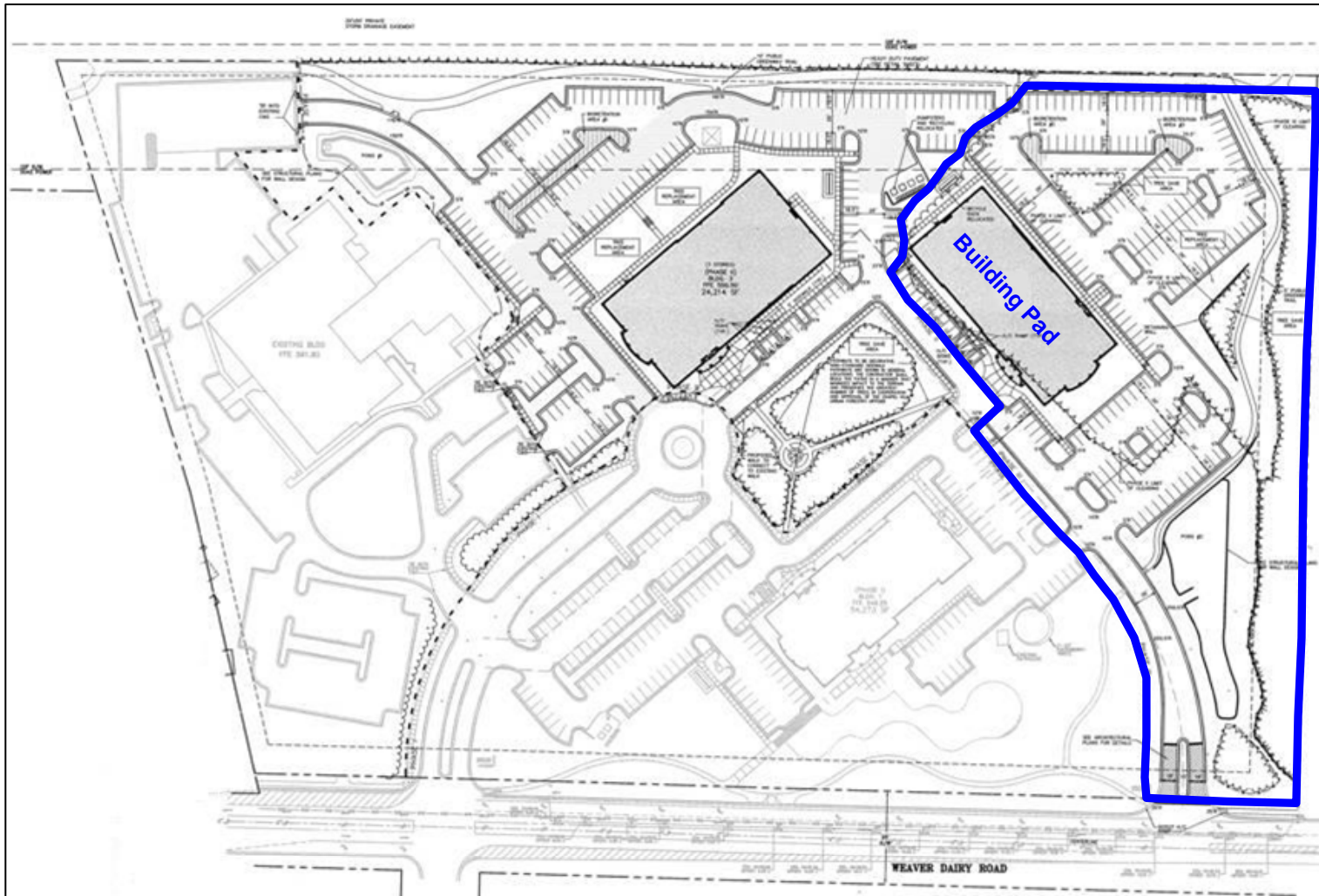
### Arnold Siegmund

Principal, Senior Vice President  
919.420.1573 direct  
[arnold.siegmund@tlgcre.com](mailto:arnold.siegmund@tlgcre.com)

Land for Sale  
**Chapel Hill 40**  
Vilcom Circle, Chapel Hill, NC



**GRUBB & ELLIS.**  
Thomas Linderman Graham



*Independently Owned and Operated*

The information contained herein was obtained from sources believed reliable; however, Grubb & Ellis|Thomas Linderman makes no guarantees, warranties, or representations as to the completeness or accuracy thereof. The presentation of this property is submitted subject to errors, omissions, changes of price or conditions prior to sale or lease, or withdrawal without notice.